

CERTIFICATION PROGRAM IN

FINANCIAL MODELING AND EQUITY RESEARCH

(Short Term Financial Analyst)

LEARNING

APPLICATION

EMPLOYMENT

COURSE HIGHLIGHTS

- ✔ The **#1 Course** to Land a **Job** in **Equity Research and Valuation**
- ✔ Certified Financial Modeling & Equity Research Course with **100% Placement** assistance
- ✔ **3/6 months internship** with an Equity Research & Valuation firm
- ✔ Gain **hands-on, practical experience** during training, similar to a **real job** within the Equity Research firm
- ✔ **80%** of the **Real-time industry used Case study**-based learning
- ✔ Our trainers: **Equity Research** working **professionals**
- ✔ A guide to **over 100+** frequently asked Equity Research **questions and their answers**
- ✔ Build **5 financial models from scratch** on your chosen **Listed/Private** companies
- ✔ Be part of our Global **Equity Research alumni** network
- ✔ Dedicated **Placement Manager** with **1-on-1 mentorship**
- ✔ Dedicated **trainer** for soft skills & interview preparation

FEATURES



INSTRUCTOR-LED SESSIONS

100+Hrs of Offline/Online Live Instructor-led classes (2.5 Hours sessions each on Saturday & Sunday) / (2.5 Hrs. Sessions Mon-Thurs.)



CERTIFICATION

Get **2** Industry Recognised **Certifications** in **1 course: Financial Modeling&Equity Research**, and **Advance Excel**, you can show them separately in your **resume**



INTERVIEW PREPARATION

Prepare you for the interview process to become an Equity Research Analyst at any of the leading Global Equity Research Firm



RESUME PREPARATION & JOB PORTAL UPDATION

Our expert will assist you in **resume building** and **job portal updation**



REAL TIME CASE STUDIES

Live case studies for each financial topic to ensure that learners can understand it thoroughly



LIFETIME ACCESS

You get **lifetime access** to the FINXL LMS which includes Videos, Excel Spreadsheets, Financial Models, Presentations, eBooks, quizzes, and case studies



ASSIGNMENTS

Each session will be followed by a **practical assignment**



FORUM

Our career square forum is the most dynamic platform to **connect with experts** across the globe

WHAT IS FMER?

A financial model is anything that is used to calculate, forecast and interpret financial results. Equity research is a method of analyzing the financial performance of the company and forecasting the scenarios of both the buying and selling nature of firm's assets in the stock market.

WHY FMER TRAINING REQUIRED?

Investment Banks and Equity Research firms **do not entertain freshers** due to the lack of practical exposure of Financial Modeling & Equity research required for the job. It is one of the most fundamental and widely sought-after skills for **core finance jobs**.

APPLICATION



Investment
Banking



Equity
Research



Merger &
Acquisition



Corporate
Finance



Credit
Rating

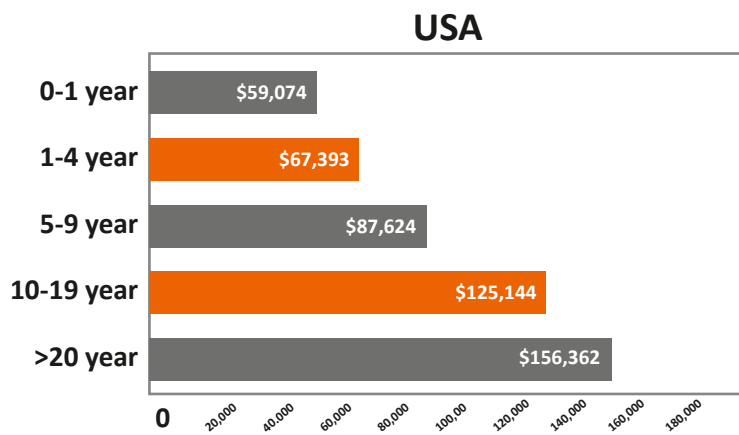
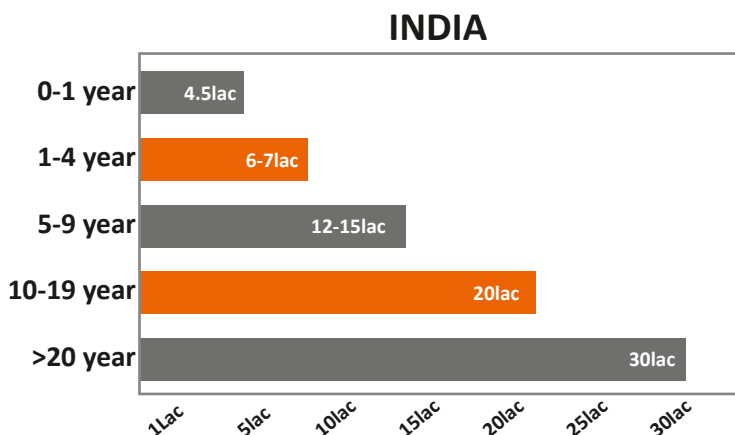


Financial
Analysis

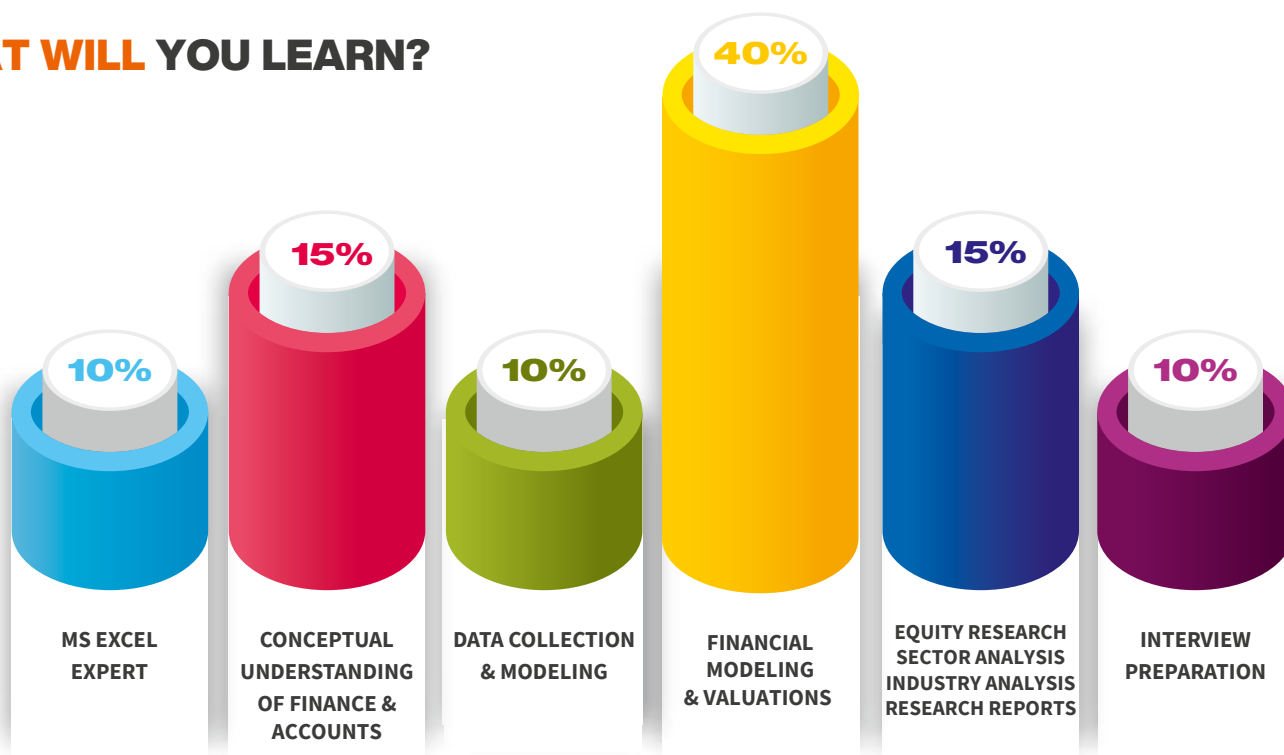
OUR RECRUITERS

Deloitte.	CRISIL An S&P Global Company	MORNINGSTAR®	MOODY'S ANALYTICS	transparent value A CLOUENIER PARTNERS COMPANY
EY	accenture	NOMURA	Honeywell	Infosys
UBS	CREDIT SUISSE	Deutsche Bank	CITICORP®	KPMG
JPMorganChase	Capgemini	vodafone	CITCO	syngenta
FORCE MOTORS	bmc	THOMSON REUTERS	TIAA	FIS

AVERAGE SALARIES



WHAT WILL YOU LEARN?



WHO SHOULD TAKE THIS COURSE?

- Any commerce Graduates & Post Graduates (BBA, BCOM, BBM, MCOM), Non-Commerce Graduate or Post Graduate (BSC, Engineers, B.E., B. Tech, M.E., After MBA or During MBA, CFA or any degree in Finance, CFA/CA Aspirants, CPAs, ICWA, CS, Back office/operations working professional, accounting working professional, KPOs/BPOs professionals, Financial Analysts, Business Analysts, Startup founders, Bankers, Financial Controllers, CFOs, CEOs, Fund Managers, PE Fund Managers, Account Receivables (AR), Accounts Payables (AP), Record To Report (R2R), Procure to Pay (P2P), Reconciliation background professionals, housewives after a long gap of marriage or kids to make a career in Finance field, Businessman / Entrepreneur.

- Skilled individuals seeking a career change to the core finance domain.

WHY FINXL?

Investment Banks and Equity Research firms **don't entertain freshers** due to the lack of minimum practical exposure required on the job. Hence here is how **FINXL bridges** the skill & experience gap and **prepares you** to be a ready-made resource available for an employer!

PRACTICAL & CASE STUDY-BASED TRAINING

- ✔ Industry relevant content
- ✔ **Case study** based hands on training
- ✔ **In-depth** understanding of Finance fundamentals
- ✔ Trained by **Investment Bankers**
- ✔ **Individual** progress measurement
- ✔ **Live internship** with Equity Research firm
- ✔ **One on one doubt-clearing** sessions
- ✔ **Lifetime** access to FINXL LMS
- ✔ Connect Equity research professionals globally



INTERVIEW SKILL TRAINING

- ✔ Mock interviews
- ✔ Frequently asked interview questions preparation
- ✔ **Resume** preparation
- ✔ **Job** portal updation
- ✔ Assertiveness and **communication**
- ✔ Financial Modeling, Sector Research, Valuation, Equity Research, Reporting & Presentation

MARKET READY

- ✔ Frequent **job** updates
- ✔ Customized **career** guidance
- ✔ **Soft skills** workshop
- ✔ Skill set mapping
- ✔ **Placement** assistance
- ✔ Scheduling **Interviews**



MODULE 1 : MS EXCEL EXPERT

- Excel Essentials & key board shortcuts
- Basic & **advance excel functions**
- Conditional Formatting, Paste Special
- Using **VLOOKUP/HLOOKUP/ Match Index**
- Using **SUMIF, COUNTIF, AND AVERAGEIF**
- **DATEDIF, YEAR, YEARFRACE & MONTH**
- **Index, Search, Choose, offset**
- **Sensitivity analysis** with Data tables
- **Pivot table**, Charting commonly used
- Dashboards, templates, **Macros**

MODULE 2 : DATA COLLECTION AND MODELING

- Authentic sources of financial data for companies based in the **United States, India, China, Germany**, and many more..
- **Tricks** to collect data in **shortest** time
- **Data collection & Data structuring** for model
- Understanding of **Financial Reports** & its types
- Types of filing **10-K, 10-Q, 8-K, 20-F** etc.
- Create Model template for 5 years historical data for
 - Revenue Drivers
 - Dividend schedule
 - Cost Drivers
 - Asset Schedule
 - Income statement
 - Debt Schedule
 - Balance sheet
 - Equity Schedule
 - Cash flow statement

MODULE 3 : FINANCE FUNDAMENTALS

- What Equity Research Analyst does?
- **Skill set** requires for Equity Research Analyst?
- Job roles of **BUY SIDE** and **SELL SIDE** Analysts
- Understanding, Reading & Analyzing of
 - Income statement
 - Balance sheet
 - Cash flow statement
 - Note to accounts
- GAAP & Non-GAAP/Reported & Adjusted numbers
- Reported/Adjusted /GAAP/Non-GAAP EPS
- Restructuring & Adjusted numbers
- Pro-forma Income statement
- Restating financials for valuation and analysis
- Concepts & treatment of
 - Minority/Non-controlling
 - Associates
 - Subsidiary
 - Convertible debt/securities
- Corporate actions & their treatments
 - Rights issue
 - Acquisitions
 - Spin-offs
 - Bonus issue
 - Interim/Annual dividend
 - Reverse split
 - Takeover
 - Stock splits
 - Merger
- 10 case studies on live companies
- Make business plan of startups

MODULE 4 : SECTOR/INDUSTRY RESEARCH

(Analyzing Sectors/Industries/Companies)

- Company's **Business model** understanding
- Economies/Sectors/Industries understanding
- Operational **drivers** & cost drivers & Projection
- Factors that impact the company's **projections & valuations**
- Case studies on '**Top Down**' and '**Bottom Up**' approaches
- **Forecasting** of IS, BS, CFS, and Schedules

MODULE 5 : FINANCIAL MODELING & VALUATIONS

- **Interlinking** of financial statements (IS, BS, CFS)
- **Tallying** the balance sheet in **30 minutes**
- Use best practices in **Financial Model Building**
- Understand & develop a **forecasting** basis for each line of IS, BS & CFS
- Build & Forecast Advanced Schedules including the following points
 - Debt Repayment Schedule (**DRS**)
 - Fixed Assets Module (**FAM**)
 - Dividend & Equity Schedule (**ES**)

RATIOS :

- In depth conceptual understanding of financial ratios
 - Liquidity ratios
 - Profitability ratios
 - Leverage ratios
 - Market value ratios
 - Efficiency ratios
- Calculation and analysis of ratios on your chosen company
- Compare your company's ratios with **competitors**
- DuPont analysis

VALUATION :

(Understanding of various Valuation methods)

1. DISCOUNTED CASH FLOW (DCF)

- In-depth step-by-step understanding of DCF
- Product/business/economic life cycle concepts
- Time value of money concepts
- Understanding & calculation of FCFF & FCFE
- Cost of capital (WACC)
 - Cost of Equity using Capital Asset Pricing Model (CAPM)
 - Cost of Debt
 - Cost of preference shares
 - Market Premium (Rm)
- Risk-Free rate of return (Rf) for listed & non-listed SMEs
- In-depth analysis of systematic & un systematic Risks
- Beta : Levered beta & Un-levered beta
- Calculate beta using the last 5 years price
- Sensitivity analysis
- Application of DCF on your chosen company
- Net present value/company value
- 'Buy' or a 'Sell' rating based on analysis

2. RELATIVE VALUATION (RV) (Trading Comps/Exit Multiple)

- Step-by-step understanding of RV & Trading comps
- Criteria to choose competitors
- Criteria to choose Ratios for comparison
- Usage of price multiples P/E, P/S, EV/EBITDA, P/B
- Drive prices using the above ratios
- Price band and valuation conclusion

3. SUM OF THE PARTS ANALYSIS (SOTP)

- Determine the Business Segments
- Value Each Segment
- Pick any of the below valuation methods to value the segment
 - DCF /Comparable companies / Precedent Transactions
- Add up all segment's valuations

4. DDM (DIVIDEND DISCOUNT MODEL) / (Gordon Growth Model)

- In-depth step-by-step understanding of DDM / GGM
- Drive model and valuation conclusion

MODULE 6 : EQUITY RESEARCH REPORT

- Introduction of various reports
- Initiating Coverage
 - Company Update
 - Scenario Road map
 - Sector/Industry Reports
- Create **two detailed equity research reports** for companies located in the **USA, India, China, Germany, and Singapore**
- **5 short reports** on your chosen Indian companies
- Economy, Industry, and sector research and analysis
- Conclusion with analyst call 'BUY', 'SELL', 'NEUTRAL'

MODULE 7 : REAL CASE STUDIES MOCK INTERVIEWS, SOFT SKILLS TRAINING

- 10+ real-time case studies
- Prepare you on 100+ frequently asked **Equity Research Interview** questions with answers
- Positive attitude and emotional intelligence training
- Placement managers for 1 on 1 mentorship
- Communication and interpersonal skills training
- Conduct regular mock interviews
- Work on individual strengths, weaknesses and prepare an interview script
- **Profile building** and marketing
- Interview scheduling & helping candidates in placements

MODE OF LEARNING

CLASSROOM / ONLINE LIVE

- ✔ 100+ hrs. rigorous training
- ✔ Trained by Investment Bankers
- ✔ Active learning
- ✔ Small size batches
- ✔ Individual progress measurement & attention
- ✔ Online reading material
- ✔ Real-time case studies & Practical approach
- ✔ Complementary eLearning
- ✔ Lifetime access to FINXL LMS
- ✔ Clear your doubts face-to-face with Experts
- ✔ Certificate of Completion

PRE-RECORDED

- ✔ 40+ hours of audio-visual material covering financial model building and equity report writing.
- ✔ Flexible learning - anytime, anywhere
- ✔ Questions & answers forums
- ✔ Online reading material
- ✔ Financial modeling eBooks
- ✔ Financial models & reports on Global companies
- ✔ Certificate of completion
- ✔ Connect with Equity Research professional Globally

CERTIFICATION PROCESS



CERTIFICATION PROVIDED



BUSINESS PROFESSIONALS

SHAPE THE BUSINESS

When it comes to determining the future strategy of a business, it can be a difficult task, particularly when there are multiple variables and scenarios to consider. Questions such as how to allocate available funds, where to relocate production facilities, and which market to enter can arise. Our financial models provide a systematic approach to these intricate issues, enabling a flexible evaluation and prioritization of all available alternatives.

RUN THE BUSINESS

Whether you are managing your business as usual or through a crisis, the achievement of targeted objectives is dependent on setting realistic forecasts, managing capital spending and ensuring cash and regulatory compliance. The supporting financial models should reflect the current business operations, have the ability to measure the impact of current or future changes in key drivers and must include monitoring capabilities.

EXPAND OR DIVEST THE BUSINESS

When developing your business to implement future strategies and achieve objectives, you may consider amalgamating suitable capabilities, assets, and expertise through transactional activities. We can provide aid in assessing the effects of synergy benefits or separation/carve-outs, as well as changes in capital structures in a typical deal. The financial models used for this must be strong and equipped with the capability to rapidly test numerous scenarios and their corresponding impacts.

EXAMPLES

SHAPE THE BUSINESS

- Strategic options
- Scenario analysis
- Product/service development
- Product/service cost & profitability
- Pricing analysis
- Cost analysis
- Dashboards & scorecards
- Monte Carlo simulation

RUN THE BUSINESS

- Capital spending
- Forecasting & reporting
- Regulatory reporting compliance
- Covenant modeling

EXPAND OR DIVEST THE BUSINESS

- Acquisitions/disposals
- Mergers
- Debt restructuring

- Sensitivity analysis
- Model reviews
- Cash flow modeling & valuation
- Carve-out planning
- Carve-out tracking
- Accounting Separation
- Synergy planning
- Synergy tracking
- Integration modeling

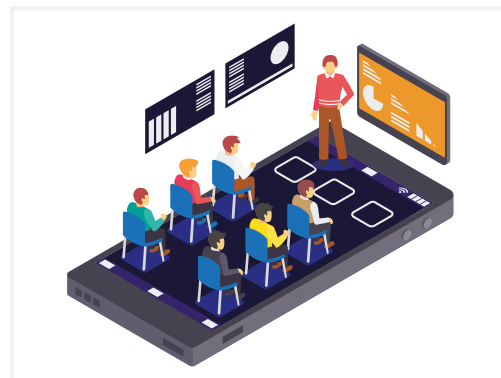
COSTING PLAN



INR 70,000
(CLASSROOM TRAINING)



INR 60,000
(REAL TIME ONLINE LIVE TRAINING)



INR 20,000
(ONLINE PRE-RECORDED TRAINING)

COURSE DURATION FOR CLASSROOM TRAINING

Intensive 100+ hours

Weekday Batch Monday to Thursday (4 Classes per week, 2.5 Hrs. Each, 2 Months)

Weekend Batch Saturday & Sunday (2 Classes per weekend, 2.5 Hrs. Each, 3.5 Months)

TRENDING COURSES

**Financial
Planning &
Analysis (FP&A)**

**Investment
Banking
(IB)**

**Financial
Analyst**

Excel Expert

**Microsoft
Power BI**

REGISTRATION AND PAYMENT

For registration and inquiries, please email us at info@finxl.in
or call us at +91 9158882688 / +91 8459024539 / +91 8109130909.

Registration will only be confirmed upon receipt of payment and registration form.

CANCELLATION POLICY

A) Registration/Seat Booking fees if it is less than Rs. 20,000 then it is **non-refundable**. Course Full First Installment Fees paid if equal or more than Rs.20,000 then that is refundable provided that refund deadlines for credit course withdrawal are met. Anything which is below Rs. 20,000 Payment will be considered as a Seat Booking Fees which is not refundable.

B) It is to be noted that the refund policy shall be applicable till the first 2 Training sessions/Videos of the selected course by team FINXL only, post that period NO refund shall be given for any course, under any circumstances.

C) The request for withdrawal from the course shall be made by the student formally in an email within the refund period.

D) FINXL ensures that all the request for the refund shall be immediately initiated from our end and will be processed within 7 working days of the request.

OTHER TERMS AND CONDITIONS:

Online training courses may not be transferred to another student.

OUR PLACEMENTS

We work end to end with the candidates for starting a career in finance by giving them access to our well knit corporate network. Few of them are mentioned below.



SHOBHIT SRIVASTAVA

PRE FINXL: ASSISTANT MANAGER, KIRLOSKAR EBARA PUMPS, PUNE
PLACEMENT: EQUITY RESEARCH ANALYST, KPMG, MUMBAI
 ★★★★★



MITHUN THAKKAR

PRE FINXL: REVAL ANALYTICS, PUNE
PLACEMENT: SR ANALYST, MOODY'S ANALYTICS, BANGLORE
 ★★★★★



HARSH NASHINE

PRE FINXL: MBA (FINANCE), MITCON
PLACEMENT: EQUITY RESEARCH ANALYST, CRISIL, PUNE
 ★★★★★



SHUBHAM PAGEY (B.E.)

PRE FINXL: JOB SEEKER! B.E.(ELECTRONICS)
PLACEMENT: FINANCIAL ANALYST, REVAL ANALYTICS, PUNE
 ★★★★★



MANOJ SHINDE

PRE FINXL: DESS EQUITY ADVISORS, GURGAON
PLACEMENT: SR. FINANCIAL ANALYST, MOODY'S ANALYTICS, GURGAON
 ★★★★★



SHAILA DIWATE

PRE FINXL: MBA (FINANCE), SINHGAD, PUNE
PLACEMENT: FINANCIAL ANALYST, REVAL ANALYTICS, PUNE
 ★★★★★



JASVINDER

PRE FINXL: REVAL ANALYTICS, PUNE
PLACEMENT: LEAD ANALYST, MOODY'S BANGLORE
 ★★★★★



TANAY LOYA (BE)

PRE FINXL: B.E. (CIVIL)
PLACEMENT: IIM, EX-SENIOR FINANCIAL ANALYST, DSII, PUNE
 ★★★★★



RISHIKA AGARWALLA

PRE FINXL: AM IN ANAND RATHI, MBA(FIN), BALAJI
PLACEMENT: FINANCIAL MODELING ANALYST, SHORE INFOTECH, HYDERABAD
 ★★★★★



GIRIJA PUJARI

PRE FINXL: B. COM., KHOPOLI
PLACEMENT: ANALYST, MORNING STAR, MUMBAI
 ★★★★★



KUSHAL KHAIRE

PRE FINXL: MBA (FINANCE), MITCON
PLACEMENT: ANALYST, DEUTSCHE BANK, PUNE
 ★★★★★



NIKHIL DESAI

PRE FINXL: RESEARCH ANALYST - NIVEZA INDIA
PLACEMENT: SR ANALYST, MOODY'S ANALYTICS, BANGLORE
 ★★★★★



SHIRIN KAMATKAR

PRE FINXL: MBA (FINANCE)
PLACEMENT: FINANCIAL ANALYST, SG ANALYTICS, PUNE
 ★★★★★



PRAGATI NAGAR

PRE FINXL: RELIANCE SECURITIES, PUNE
PLACEMENT: CRISIL, EQUITY RESEARCH ANALYST
 ★★★★★



Himanshu Badane

PRE FINXL: MBA (FINANCE), SAI BALAJI, PUNE
PLACEMENT: FINANCIAL ASSOCIATE, SG ANALYTICS
 ★★★★★



Dharmil Mehta

PRE FINXL: ANALYST-NORTHERN TRUST CORPORATION
PLACEMENT: CONSULTANT-BUSINESS VALUATIONS, CRISIL, PUNE, INDIA
 ★★★★★



AYUSHI ZAMINDAR

PRE FINXL: ICICI Bank
PLACEMENT: EQUITY RESEARCH ANALYST, WHEATON ADVISORS, PUNE
 ★★★★★



AWESH DAREKHAN

PRE FINXL: MBA, JOB SEEKER!
PLACEMENT: EQUITY RESEARCH ANALYST, DALOOPA NOIDA
 ★★★★★



TANMAY GUNJAL

PRE FINXL: OPS EXECUTIVE, GLOBEOP FINANCIAL SERVICES, MUMBAI, CFA-2 CLEARED
PLACEMENT: CREDIT ANALYST, CRISIL, PUNE
 ★★★★★



KAMYA JETHWANI

PRE FINXL: M. COM, MBA ASPIRANT
PLACEMENT: IIM
 ★★★★★



SAMEER CHOUDHARY

PRE FINXL: CFA LEVEL 3, OPS EXECUTIVE, GLOB UP, MUMBAI
PLACEMENT: VALUATION ANALYST, PKF ADVISORY AUSTRALIA
 ★★★★★



DEVASHREE PATIL

PRE FINXL: M. COM, K.M.C COLLEGE, KHOPOLI
PLACEMENT: DATA RESEARCH ANALYST, MORNING STAR, MUMBAI
 ★★★★★



SUBRAMANIAN K

PRE FINXL: CFA LEVEL 3 CANDIDATE
PLACEMENT: EQUITY RESEARCH ANALYST, WHEATON ADVISORS, PUNE
 ★★★★★



VERSHA SINGH

PRE FINXL: STUDENT, CA INTER, 3 YEARS OF ARTICALSHIP, INDORE
PLACEMENT: EQUITY RESEARCH ANALYST, SG ANALYTICS, PUNE
 ★★★★★

TRENDING COURSES

**Financial
Analyst**

**Investment
Banking
(IB)**

**Financial
Planning &
Analysis (FP&A)**

Excel Expert

**Microsoft
Power BI**



**Our Students Reviews
4.9 Out of 5**



Pay using any UPI app



STAY TUNED WITH US

Get newsletter, Job Openings, Financial Models, Research Reports, Free Course Materials and more !

 **+91 91588 82688 / +91 84590 24539 / +91 81091 30909**

 **info@finxl.in**

 **www.finxl.in**



Pune (MH) INDIA

Office - 310,311, Magnolia Business Center, Baner-Pashan Link Road, Baner, Pune - 411021.